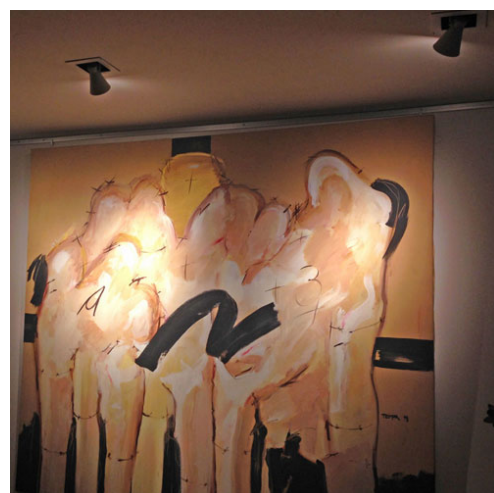
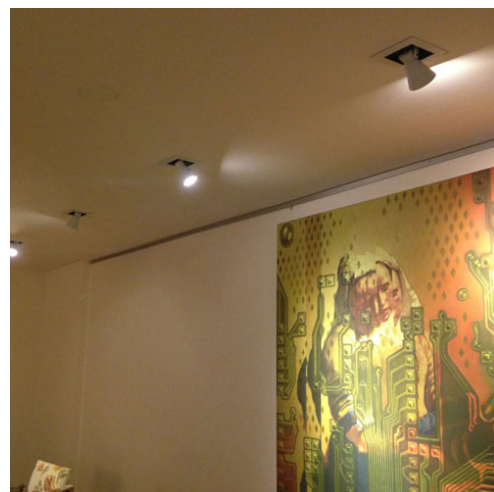


**TESTA BOX SMALL X1**

**TECHNICAL DATA**



Extractable recessed system with one Testa projector. Available for MR16 GU10 led lamp in two sizes, or HCI RMini discharge bulbs MR16.

**Code:** EM TEBX H16 1

**Bulb:** MR16 GU10 led

**Socket:** GU10

**Power:** 1x7W

**Voltage:** 220V

**Dimensions:** 140 x 140 h: 195 mm.

**Colors:**

Texturized White

Texturized Aluminum

Texturized Black

IP20



↻ 90°



## TESTA BOX CHICO X1

## TECHNICAL DATA

**Code:** EM TEBX GU 1

---

**Bulb:** MR16 GU10 led

---

**Socket:** GU10

---

**Power:** 1x7W

---

**Voltage:** 220V

---

**Dimensions:** 140 x 140 h: 195 mm.

---

**Colors:**

Texturized White

Texturized Aluminum

Texturized Black

---

## TESTA BOX CHICO X1

## TECHNICAL DATA

**Code:** EM TEBX HCI RM 1

---

**Bulb:** CDM RMini

---

**Socket:** GX10

---

**Power:** 1x35W

---

**Dimensions:** 140 x 140 h: 195 mm.

---

**Colors:**

Texturized White

Texturized Aluminum

Texturized Black

---

