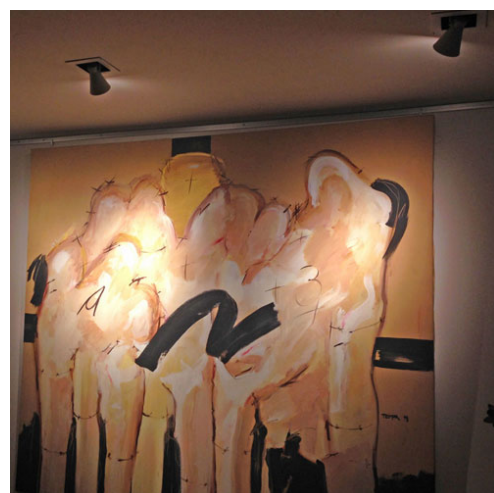
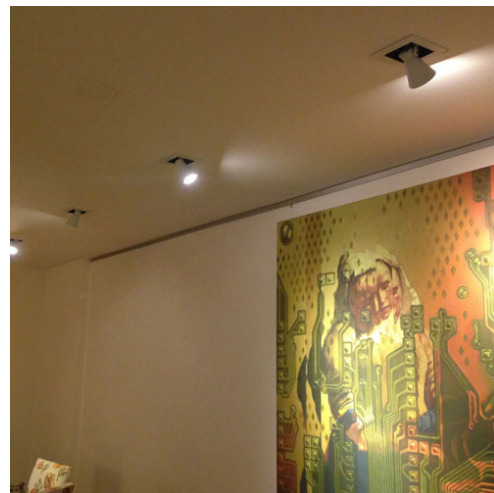


TESTA BOX SMALL X2

TECHNICAL DATA



Extractable recessed system with two Testa projectors. Available for MR16 GU10 led lamp in two sizes, or HCI RMini discharge bulbs MR16.

Code: EM TEBX H16 2

Bulb: MR16 GU10 led

Socket: GU10

Power: 2x7W

Voltage: 220V

Dimensions: 140 x 266 h: 195 mm.

Colors:

Texturized White

Texturized Aluminum

Texturized Black

IP20



↻ 90°



TESTA BOX CHICO X2

TECHNICAL DATA

Code: EM TEBX GU 2

Bulb: MR16 GU10 led

Socket: GU10

Power: 2x7W

Voltage: 220V

Dimensions: 140 x 266 h: 195 mm.

Colors:

Texturized White

Texturized Aluminum

Texturized Black

TESTA BOX CHICO X2

TECHNICAL DATA

Code: EM TEBX HCI RM 2

Bulb: CDM RMini

Socket: GX10

Power: 2x35W

Dimensions: 140 x 266 h: 195 mm.

Colors:

Texturized White

Texturized Aluminum

Texturized Black

